

Municipal/Utility Applications

Using 3D laser Scanner technology, Falk-PLI provided a 3D as-built model for our client to help aid with a 100 million dollar expansion project. 3D models of existing conditions were made to help aid in the design of the new expansion as well as being used for clash detection by providing a detailed comparison of existing conditions with newly designed plans.

Laser Scanning Services

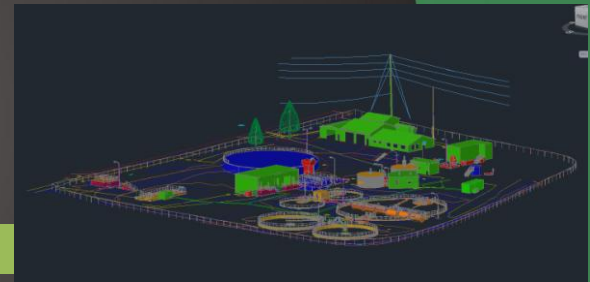
Laser Scanning technology enables Falk-PLI to measure and model large, complex sites and structures quickly, accurately, and safely. Laser Scanning serves as a risk mitigation strategy in reducing overall field time exposure and the costs associated with rework in design, fabrication, and construction. The process measures individual data points in 3D that are converted into CAD drawings to create a visual database, conceptual designs, and surface mappings. Multiple scans can then be joined together to create a complete model of space based on clients needs. Services include:

- As-built inspection
- 2D/3D CAD Drawings
- Reverse Engineering
- BIM/3D Models
- Clash Detection
- Subsidence and Deformation Monitoring
- Structural Inspection

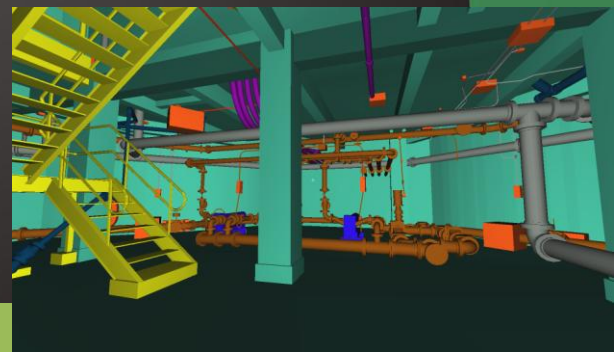
At Falk-PLI, we pride ourselves in our ability to integrate technology and information to help our clients solve the most complex problems.



1



2



3

1. 2D topographic survey of a wastewater treatment facility
2. 3D Model of entire wastewater treatment facility
3. 3D Model of a Secondary Clarifier Building



Data • Experience • Solutions

falk-pli.com • 888.965.1143