

Wacker Drive Downtown Chicago

Wacker Drive has been a major roadway in the heart of Chicago's downtown area for more than 80 years. The east-west section of Wacker Drive from Michigan Avenue to Randolph Street reconstruction took place in 2001-2002. Phase One of Revive Wacker Drive involved the widening of the roadway and clearances on the east-west sections of Wacker, as well as creating space for the Chicago River walk and restoring the historic limestone elements of Wacker Drive's original appearance of the 1920s. (<http://wackerdrive.net/History/>)

Falk PLI's involvement in this historic project included providing surveying and clearance measurements for the widening of Wacker Drive and critical in the creation of the new river walkway. Additionally, Falk PLI provided Laser Scanning services and a 3D model of the limestone stairway for the historical renovation to replicate the original 1920's design.

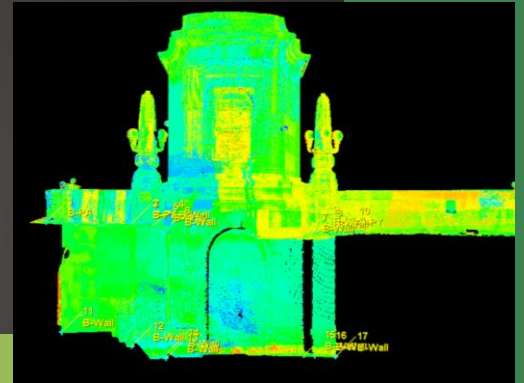
Laser Scanning Services

Laser Scanning technology enables Falk PLI to measure and model large, complex sites and structures quickly, accurately, and safely. Laser Scanning serves as a risk mitigation strategy in reducing overall field time exposure and the costs associated with rework in design, fabrication, and construction. The process measures individual data points in 3D that are converted into CAD drawings to create a visual database, conceptual designs, and surface mappings. Multiple scans can then be joined together to create a complete model of space based on clients needs. Services include:

- As-built inspection
- 2D/3D CAD Drawings
- BIM/3D Models
- Clash Detection
- Subsidence and Deformation Monitoring
- Structural Inspection



1



2



3

1. Photo of scanned Bridge structure
2. 3D point cloud of scanned bridge structure
3. Wacker Drive bridge spanning the Chicago River



Data • Experience • Solutions

falk-pli.com • 888.965.1143