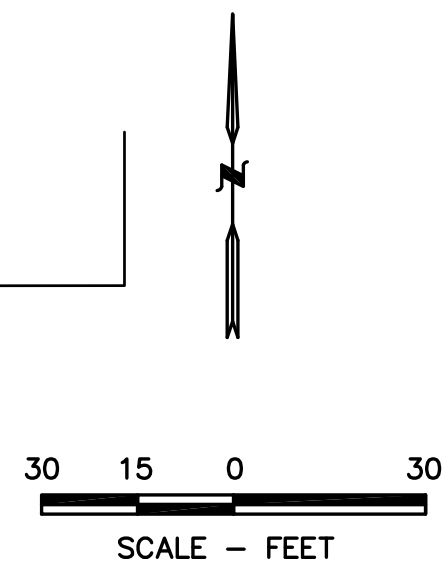
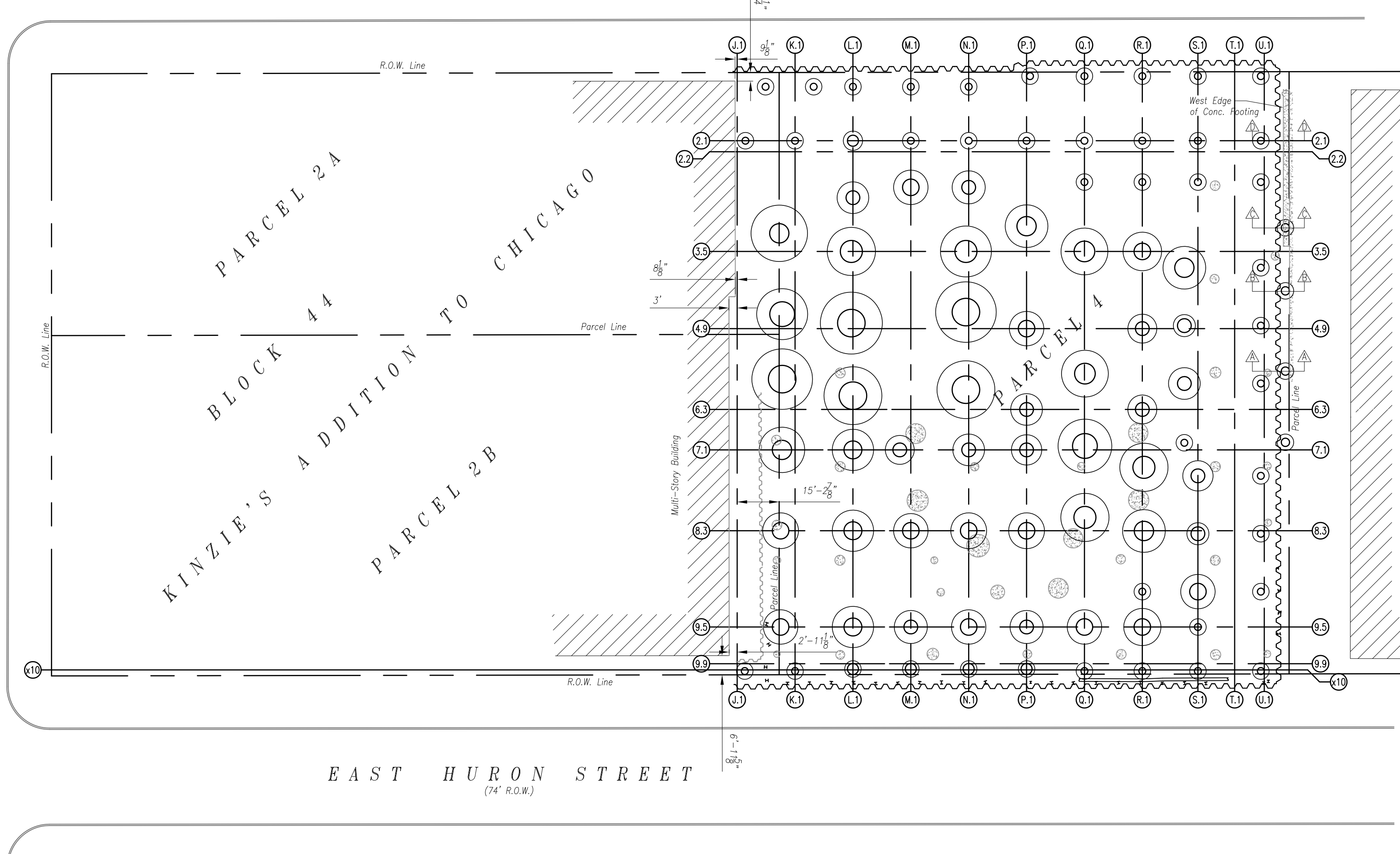


N:\Power\15082191 - NWU Biomedical Research Center.dwg\02a05105_A5-Build.dwg

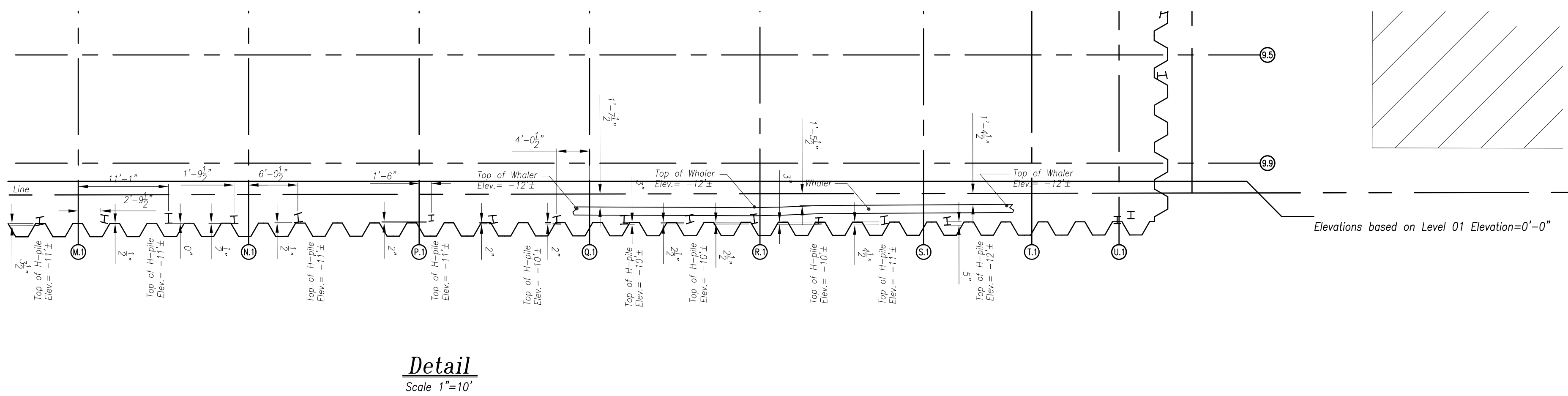


NORTH FAIRBANKS COURT
(66' R.O.W.)

EAST SUPERIOR STREET
(74' R.O.W.)



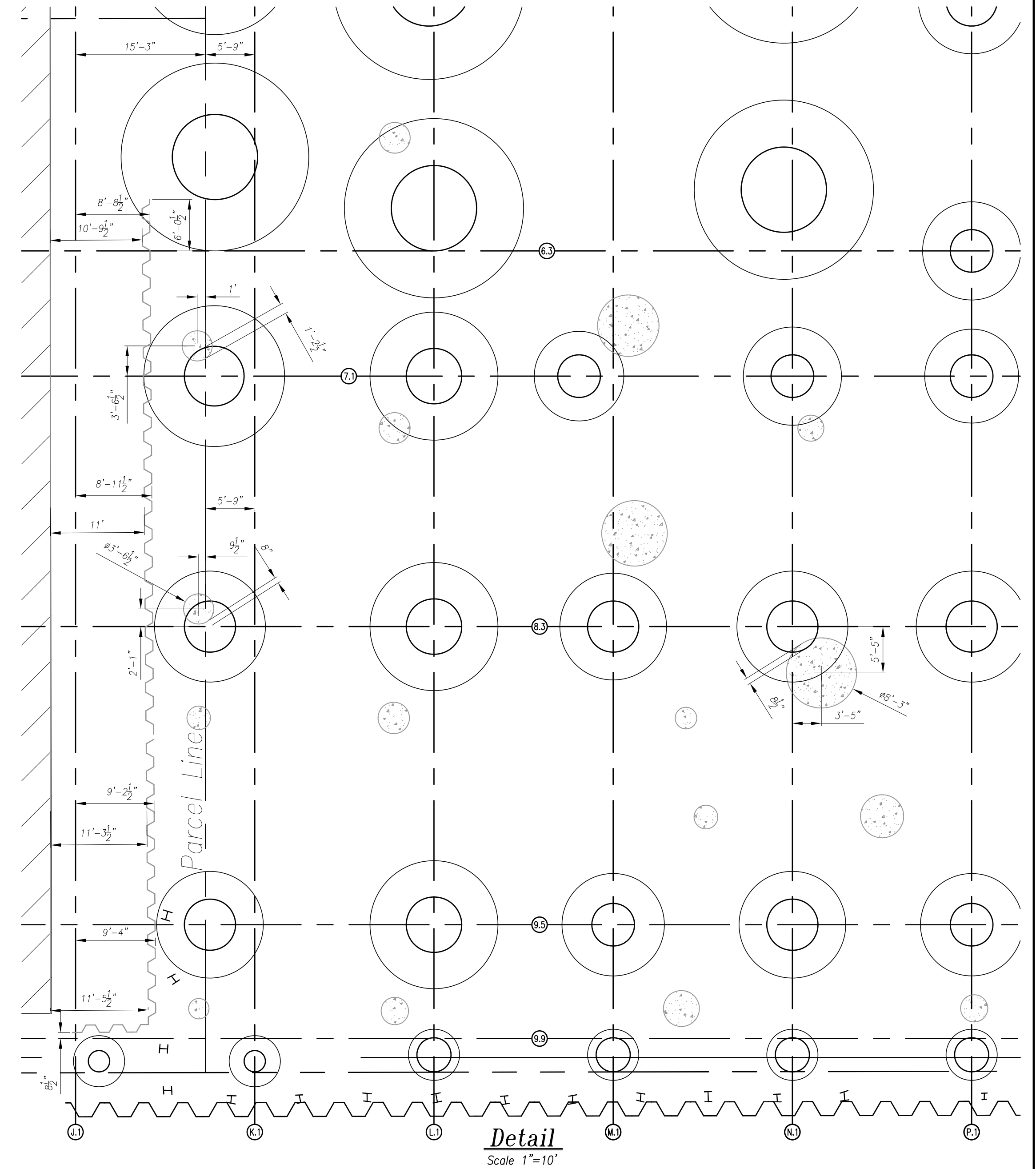
EAST HURON STREET
(74' R.O.W.)



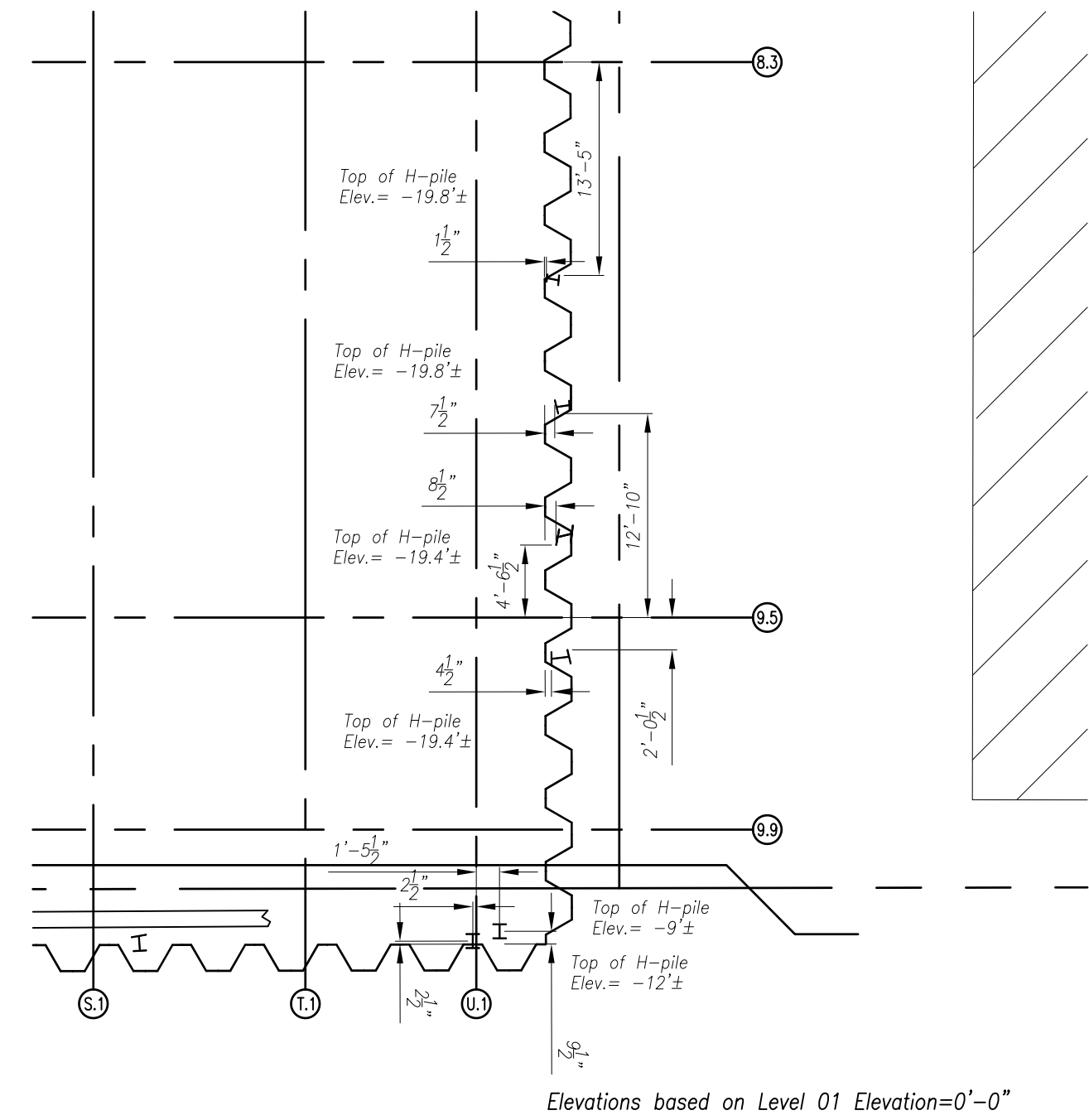
Detail
Scale 1"=10'

- Elevations based on Level 01 Elevation=0'-0"
- ⊙ Denotes Found Concrete Caisson
- ⊙ Denotes New Concrete Caisson and Bell
- ⌋ Denotes New Sheet Pile Wall

Elevations based on Level 01 Elevation=0'-0"



Detail
Scale 1"=10'



Detail
Scale 1"=10'

SCALE: 1" = 30'	DESIGNED: KDS	DATE: 9-17-2015	REVISIONS - DESCRIPTION
	DRAWN: KDS		
FILE:	CHECKED:		
Power Construction Co. Northwestern University Biomedical Research Center AS-Built		6370 Ameriplex Drive Suite 100 Portage, IN 46368 PHONE: (219)-762-7024 FAX: (219)-764-4261	
Sheet 1 of 2			